

**Are microbial  
contaminants  
hiding in  
your indoor  
environment?**

*Nationwide  
Environmental Solutions*

The logo for Nationwide Environmental Solutions (NES) features the letters 'NES' in a bold, white, sans-serif font. The 'N' and 'E' are white, while the 'S' is black with a green leaf-like shape integrated into its right side.

Featuring mPact™ with **ÆGIS** Microbe Shield® Technology



# We protect the great indoors!



## A truth as basic as the air you breathe:

The interior environments where we live and work have a big impact on the way we feel. It's been proven that contaminated "touch surfaces" (doorknobs, switch plates, remote controls, etc) in addition to compromised air quality in enclosed indoor environments can have truly dramatic affects on health and even on overall life expectancy. Taking an extreme example, the average life expectancy of a career coal miner (not including accidents) is approximately five years shorter than that of a typical office worker.

Fortunately, most of us don't live our daily lives in environments as contaminated as a coal mine. Still, many people are unaware of the potential health risks in their own interior environments until they begin suffering from symptoms such as headaches, fatigue, nausea, nasal congestion, dry eyes or difficulty breathing. It's a fact: the Environmental Protection Agency (EPA) lists poor indoor air quality as one of the top five threats to public health in the United States.

# Don't let microbial contamination rob the value of your home or commercial properties.

## What's the problem?

Sometimes indoor contamination is obvious and sometimes it's not. While grime and odors often indicate problems, there are plenty of cases where seemingly clean, tidy environments are contaminated with harmful bacteria or other microbial agents. For instance, a TV remote that is tainted with dangerous disease-causing bacteria usually looks no different than one that isn't.

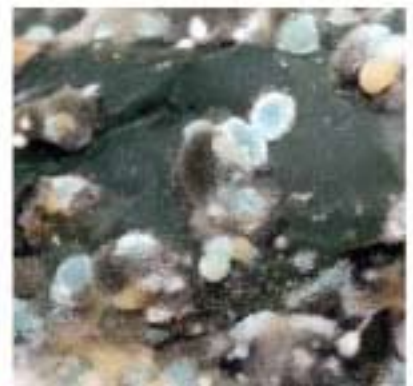
We have all smelled that "musty" odor that often accompanies mold and mildew in moist environments. In fact, odors of all kinds are good indicators that you are breathing in more than just pure, clean air. Odors are caused by tiny airborne molecules called volatile organic compounds (VOCs). Not all VOCs are harmful like those given off by toxic mold ...but many are.

Another easy-to-spot indicator for air quality problems is an excessive level of dust on furniture and other flat surfaces. Dust is comprised of small particles that "precipitate" out of the air. If you can see dust on the furniture, you can generally assume that it is also present in the air. Dust can carry bacteria, viruses, mold spores and allergens and is often the cause of respiratory ailments.

Other interior contamination problems are harder to detect but can be equally dangerous. Odorless, colorless gases such as carbon monoxide and ozone can cause chronic illness and sometimes death. Airborne chemicals, smoke, and even excess humidity can have a negative affect on overall health and quality of life.

### Common Indoor Contaminants

- Mold
- Bacteria
- Fungi
- Odors
- Algae
- Mildew
- Allergens
- Excess Moisture
- Dust Mites
- VOCs
- Dust
- Smoke
- Pet Dander
- Carbon Monoxide
- Ozone
- Spores
- Paint fumes
- Pesticides
- Carbon Dioxide
- Aerosol Chemicals



# The mPact **GAMEPLAN**<sup>™</sup> service package from NES identifies problems and generates the solution that's right for you

**NES** offers a unique three-step approach for diagnosing and treating problems in indoor environments. Our approach is both affordable and extremely effective:

**Step 1: Testing**  
**Step 2: Treatment**  
**Step 3: Prevention and Maintenance**

We'll walk you through each of these three steps in the pages that follow.

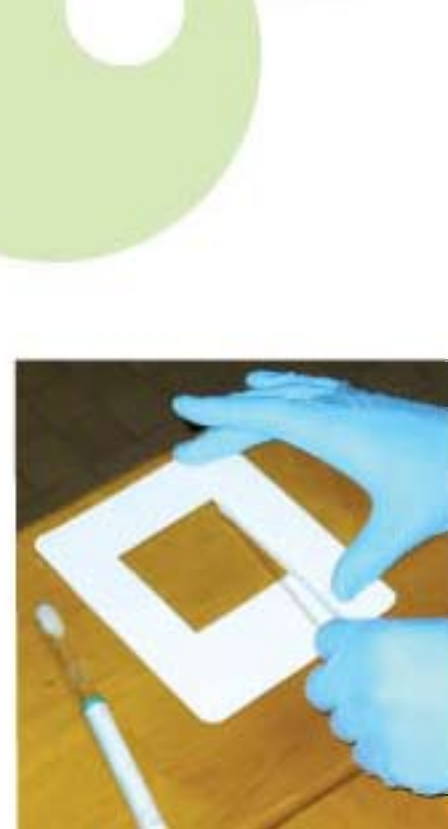
## 1 **TESTING:** The true key to controlling costs

**B**efore investing in expensive filtration devices, invasive clean-ups or costly remodeling projects, it makes sense to identify and quantify potential problems in your interior environments. Each year, millions of dollars are wasted by people who go overboard trying to eliminate odors, allergies and illnesses without first identifying the problems and their sources. mPact's economical evaluation methods allow property owners to focus on fixing only what needs to be fixed.

In some cases, the testing phase consists of nothing more than a visual walk-through by a certified mPact technician who is trained to identify the observable signs of microbial contamination. However, most of our clients choose to perform a more comprehensive battery of tests that employs objective scientific methods to diagnose---and quantify---any problem(s) that may be present. Based on site-specific requirements, your mPact technician may utilize air sampling techniques, surface swabs, and/or thermal imaging equipment to collect the necessary data.

The collected information and samples are then sent to an independent laboratory for microscopic evaluation and analysis. The laboratory provides a discreet report detailing any microbial, particulate or chemical contaminants that may have been found. This may include bacteria, mold, fungi, algae, VOCs (odors), large and small particulates (dust), carbon monoxide, excess carbon dioxide, etc.

Test data is graphed for comparison with typical values and acceptable levels. Data is compiled into a detailed report, and your mPact technician will review the results and ramifications with you. This data will be the basis of your personalized **GAMEPLAN** to address any problems that were found.





Importantly, your air quality test results become a benchmark. After remediation work is completed, the same tests can be run again at intervals, so we can scientifically confirm that contamination problems are being adequately controlled.

In cases where mold, mildew and moisture are clearly a problem, we provide expert evaluations using visual techniques and/or sophisticated thermal imaging equipment that actually lets us look inside your walls to pinpoint moist areas that may harbor mold or other microbial hazards. While others are tearing into walls in search of such problems, mPact technicians can usually identify the sources of moisture and map the paths it takes without disturbing walls, ceilings, framing or foundations. We can provide thermal “snapshots” that pinpoint problem areas and allow them to be repaired with surgical efficiency. Again, the same testing can be repeated following remediation to verify that the problems have been controlled.

## 2 TREATMENT: Fix what's broken; save what's not

It is always our goal to limit the invasiveness---and in turn, the cost---of the treatments and repairs that are necessary to solve your indoor contamination issues. Based on the results of your custom evaluation, mPact will provide a comprehensive remediation plan that addresses problems at the source and preserves everything that can be saved. This approach not only costs less, it reduces time and inconvenience factors.

In many cases, treatment involves nothing more than better air filtration, or improved humidification or dehumidification. In other cases, mPact's exclusive inline AirClarity™ Purifiers may be needed in your HVAC ducts to eliminate airborne bacteria, mold, dust and allergens. However when moisture, mold or bacterial infestations are the problem, remediation can range from relatively simple to fairly complex. No matter how serious the problem, you can count on your personalized mPact **GAMEPLAN** from **NES** to identify the most economical way to address it.

Your personalized **GAMEPLAN** will help you identify exactly what must be removed and what can be saved. After repairs are complete and moisture problems are corrected, the mPact team goes to work cleaning and disinfecting the structure from the inside out.

Our team uses proprietary cleaners that are available only through mPact and our authorized affiliates. We have developed an array of specialized cleaning agents and disinfectants for every type of surface we encounter.



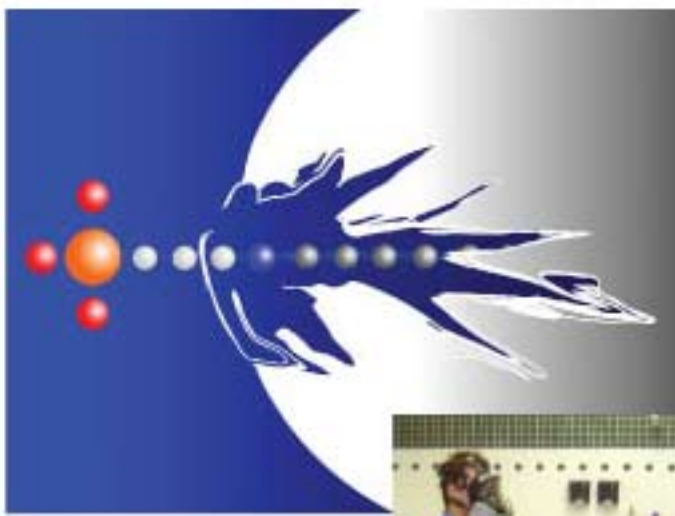
# An mPact service contract from NES can help you avoid indoor contamination for good

The biggest weapon in our arsenal, however, is *mPale*<sup>™</sup>, our exclusive antimicrobial agent that controls mold and bacteria not with poison, but by puncturing cell walls on a microscopic level. *mPale*'s unique spiked molecular structure is imperceptible to human touch but is highly effective against virtually all molds and most bacteria.

This patented technology, registered with the EPA as *ÆGIS Microbe Shield*<sup>®</sup>, is available only through mPact and our authorized affiliates.

*mPale* Antimicrobial is colorless, odorless, and can be applied to wood or steel framing, sheetrock, carpets, upholstery and painted surfaces. The real beauty of this product is that, once it is sprayed on, it bonds to the surface and retains its effectiveness indefinitely unless painted or covered. Unlike chemical poisons, *mPale* does not lose its effectiveness over time.

For property owners this means that there is finally an affordable way to control mold and bacteria long-term.



## 3 PREVENTION and MAINTENANCE

Whether you've had contamination problems in the past or simply wish to avoid them in the future, mPact's **GAMEPLAN** service package from NES will cover your needs. Whenever we assess or treat a property, long-term prevention is always our goal. Even when pre-tests show little contamination, many owners still ask us to "inoculate" their properties against future problems via treatment with our long-acting *mPale* Antimicrobial.

When any type of contamination is present, post-testing provides essential verification that the problem has been controlled. It's also a great way to show our clients the often dramatic results of our services.

The ultimate peace of mind is provided by one of mPact's long-term service contracts that provide annual reinspections, re-testing and/or optional scheduled service calls. We will present all of the options and help you determine the appropriate level of service when we discuss your personalized **GAMEPLAN**.

**Don't panic...Call NES  
(866) 417-1769**

## **A special *GAMEPLAN*<sup>™</sup> for builders...**

**W**e have a special prevention program for builders, developers and anyone else undertaking new construction projects. In this program, we pre-treat the "bones" of the structure with our exclusive *mPale* Antimicrobial agent at the dry-in stage. Later, we come back to perform a second treatment when the structure is completed and the carpet and interior paint have been applied. This program is fast, easy and affordable. It protects the structure against mold and bacteria from the inside out. And it protects builders and owners from future woes. It is also a huge selling point, especially in humid or flood prone areas where mold and bacterial infestations are most common.

mPact is perhaps best known for treating the training and locker room facilities of major league sports teams across the country. While we enjoy the attention that these hi-profile jobs bring, we are equally focused on treating homes, commercial buildings, schools, hotels/motels, restaurants, healthcare facilities and factories.

Find out if our personalized **GAMEPLAN** service package from **NES** is right for you. Call or email **NES** for more information.

Toll free: **(866) 417-1769**  
email: **info@nwesllc.com**



**NES**  
Nationwide  
Environmental Solutions

**We protect  
the great  
indoors.**

Toll free: **866.417.1769**

Phone: **504.885.3289**

Fax: **504.885.3290**

Email: **info@nwesllc.com**



*Nationwide  
Environmental Solutions*

4525 Airline Drive, Metairie, LA 70001



On the Web: **www.mpactusa.com**